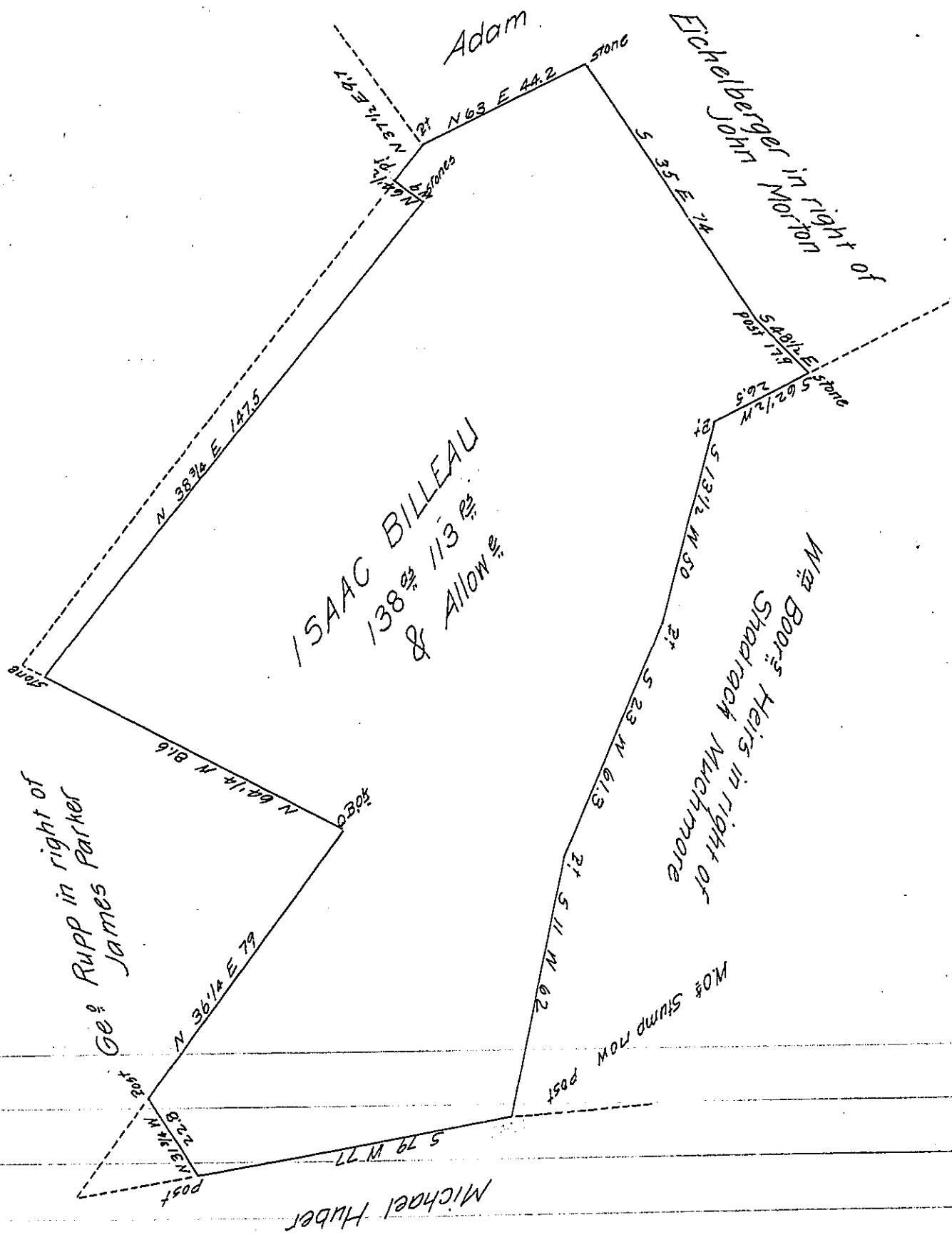


FORM NO. 1.



Draught of a Tract of Land situate in East pennisboro Township Cumberland County Cont<sup>g</sup>  
 One hundred and thirty eight Acres and One hundred and thirteen perches & Allow<sup>e</sup> of six  
 P<sup>er</sup> Ct for Roads &c It being part of 147 A<sup>res</sup> 149 P<sup>erches</sup> & Allow<sup>e</sup> which was Surveyed In Pursuance  
 of an Order of Survey grant<sup>d</sup> to Isaac Billeau dat. 23<sup>rd</sup> Day of January Anno Domini 1767  
 N<sup>o</sup> 2560 Surv<sup>d</sup> & Divided the 20<sup>th</sup> Day of March Anno Domini 1824.

To Samuel Cochran Esquire

Sam<sup>l</sup> Ruby

Surveyor General

DS.

IN TESTIMONY that the above is a copy of the original remaining on file in  
 the Department of Internal Affairs of Pennsylvania, made  
 conformably to an Act of Assembly approved the 16th day of  
 February 1833, I have hereunto set my hand and caused  
 the Seal of said Department to be affixed at Harrisburg,  
 this seventeenth day of January 1907

*Isaac B. Brown*  
 Secretary of Internal Affairs.